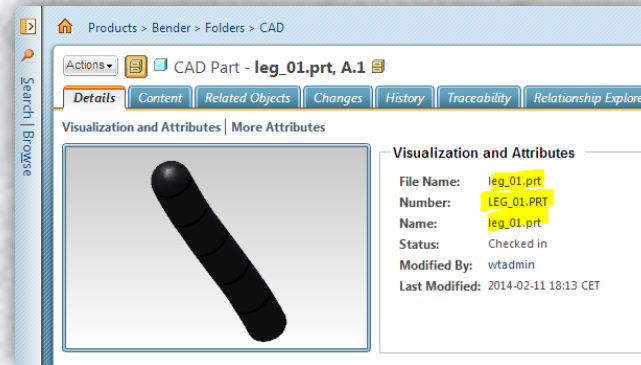
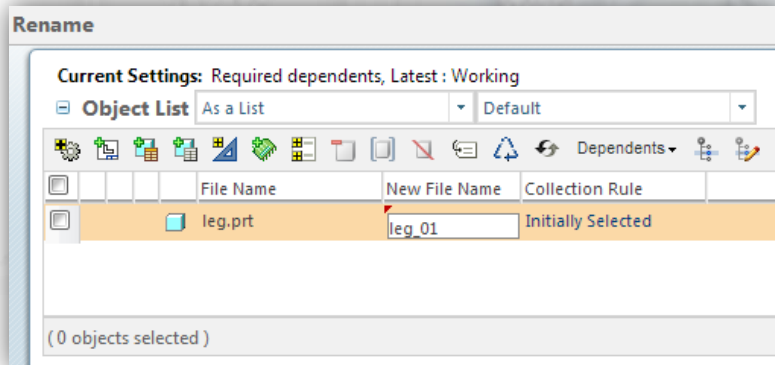


Customizations for Windchill®

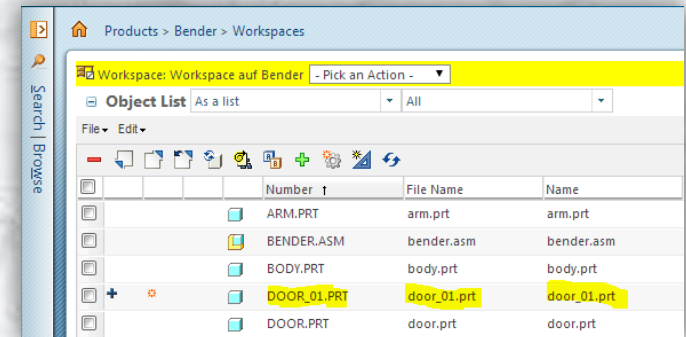
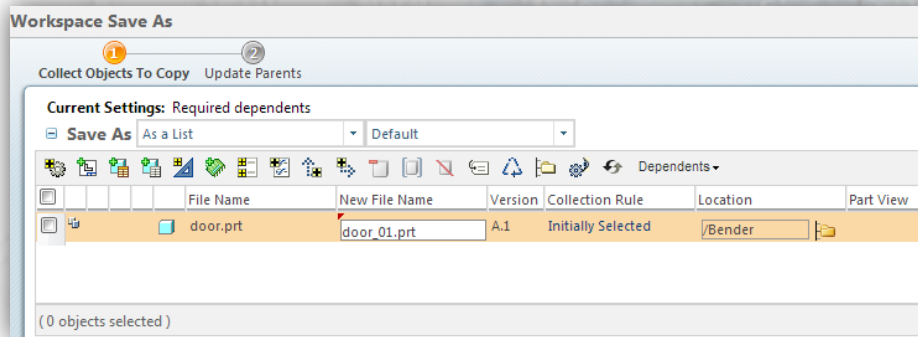
Simple Rename

- Synchronize CADName, Name and Number on Rename
- Enter only Filename in Rename dialog window
- Value of Filename is passed to Number and Name



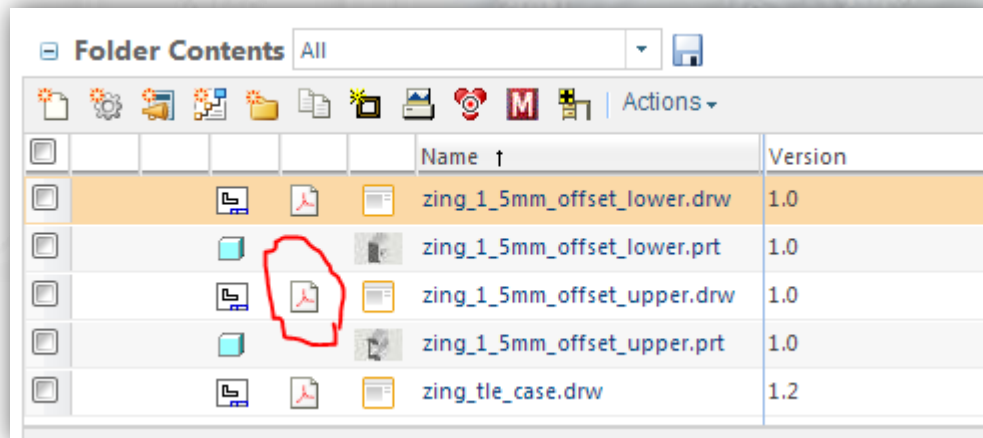
Simple Save As

- Synchronize CADName, Name and Number on Save As
- Enter only Filename in Save As dialog window
- Value of Filename is passed to Number and Name



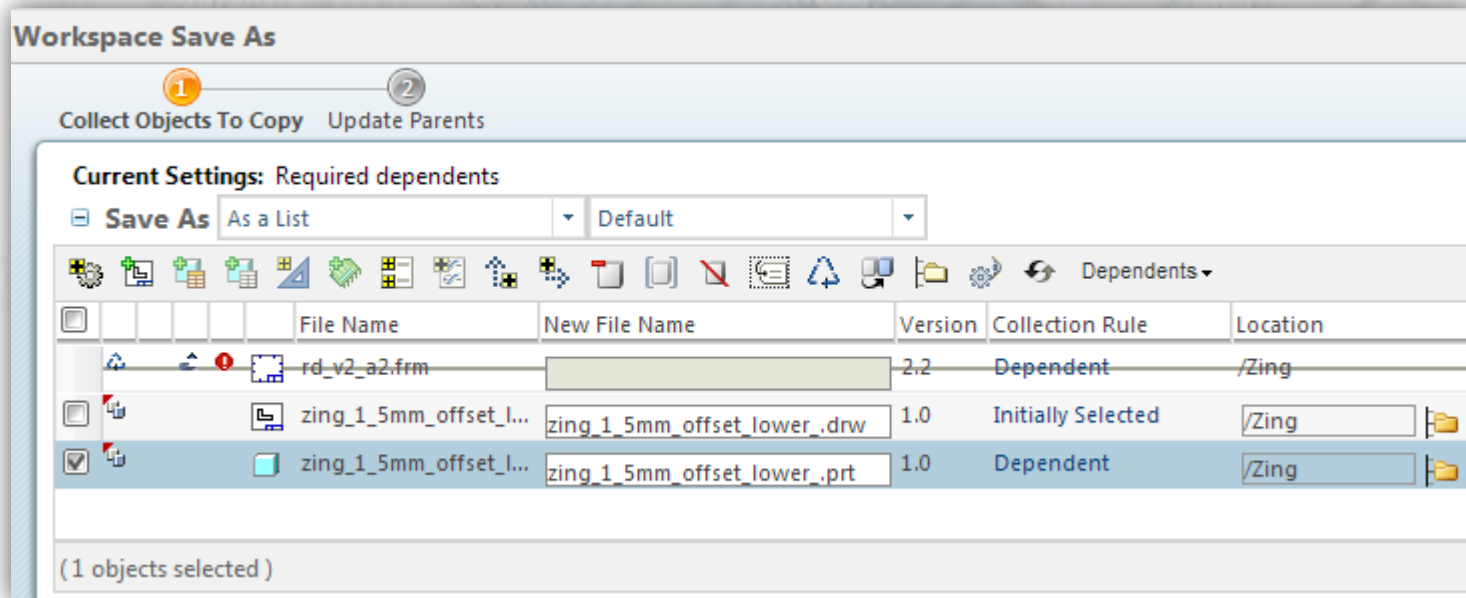
1-click Drawing Access

- Open drawing representation with just one mouse click
- Icon for representation is available in column Format Icon
- Useful for additional representations like pdf or dxf



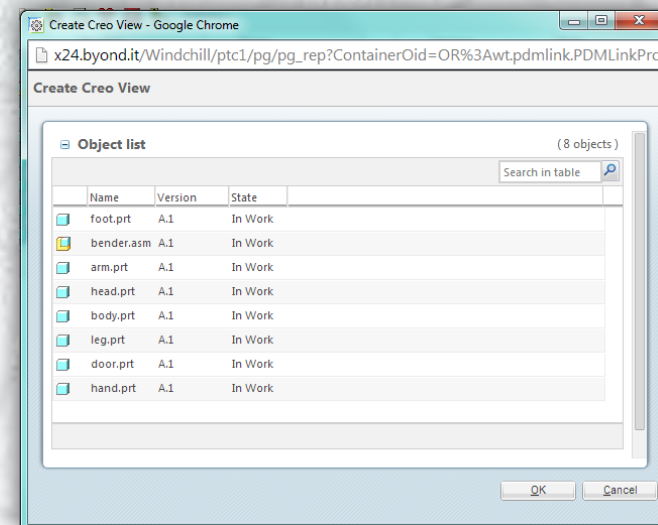
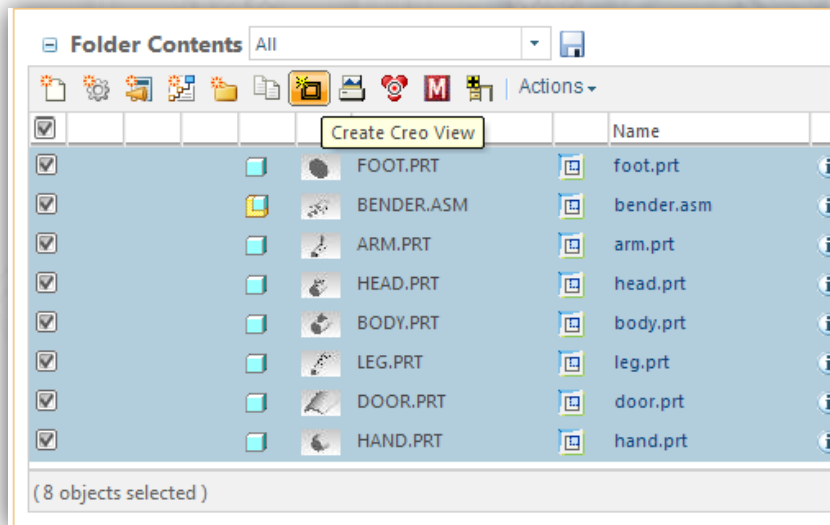
Exclude drawing frame on Save As

- OOTB, during Save As the drawing frame is included
- When not removed manually, the frame gets copied as well
- This feature excludes the frame automatically from Save As actions



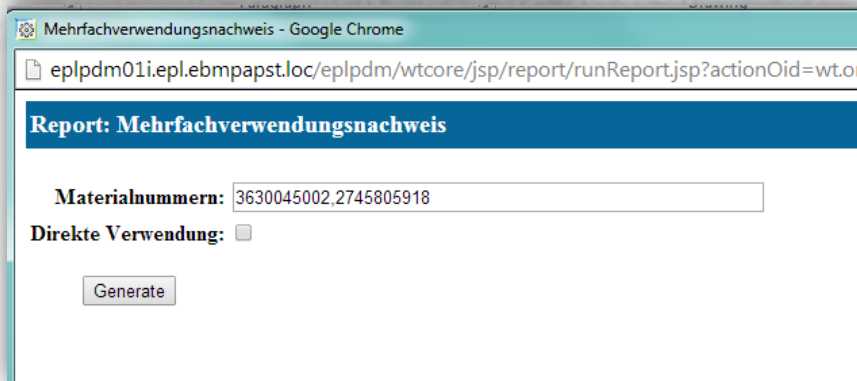
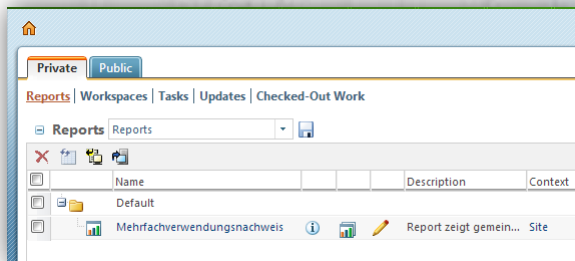
Multi Object Publish

- Send multiple objects to the publisher
- Useful when publish is not active on check in
- Objects are collected in a wizard



Common Used By Report

- Report shows common usage of more than one object
- Shows common usage in same level or different level in tree
- Available on Home – Reports screen



Enhanced Publish Job

- Lets you control what you like to publish
- Publish objects based on lifecycle states, object types, timeframes, ...
- Integrated in Windchill's WVS Job scheduler, configurable via Preferences

WVS Job Scheduler	Preferences for wbbPublish and wbbPurge jobs
wbbPublish	Preferences for wbbPublish jobs
Force republish	No Force republish of objects which already have representations.
List of CAD types to publish	CADDRAWING,CADC... Comma separated list of CAD types to publish.
List of lifecycle states to publish	RELEASED Comma separated list of lifecycle states to publish.
Max objects to publish	5 Maximum number of objects to publish.
Number of days in the past to publish	0 Enter the number of days in the past you want to publish.
Publish iterations	All Define rules for iterations to publish.

Purge Representations Job

- Purge visualization data from database
- Configurable options - timeframe, object types, latest iterations and versions
- Integrated in Windchill's WVS Job Scheduler

Schedule Job for Site

Name:

Description: Only create log file

Job Type:

Job:

Start job: Immediately

On: Month Day Year Hour Minute

Job frequency: Once

Every: Day Hour Minute

Delete jobs older than: days.

Scheduled Jobs for Site

Scheduled Jobs

Name	Description	Context	Start Date	Next Date	Frequency	Job	Status
------	-------------	---------	------------	-----------	-----------	-----	--------

WVS Job Scheduler	Preferences for wbbPublish and wbbPurge jobs
wbbPublish	Preferences for wbbPublish jobs
wbbPurge	Preferences for wbbPurge jobs
End date	2014-02-13 00:00:00 Enter date to purge representations created before that time.
Keep iteration	Keep none Define rules for iterations not to purge.
Max representations to purge	5 Maximum number of representations to purge.
Queue chunk size	500 Maximum number of representations processed within one queue en...
Representation CAD types	CADASSEMBLY Comma separated list of CAD types for which representations should...
Start date	2014-02-12 00:00:00 Enter date to purge representations created after that time.